

RUB'N'ETCH® Glass Etching Stencil

Designs are Permanent and Dishwasher Safe!

INSTRUCTIONS & ADDITIONAL MATERIALS NEEDED: Work in a well ventilated work area!

ARMOUR ETCH® Glass Etching Cream, Brush, Glass Cleaner, Plastic Gloves, Water Source, Masking Tape & Paper Towels
IMPORTANT: ARMOUR ETCH® Cream will not etch plastics and Pyrex®. When in doubt, test the material before starting. Please read safety instructions on the ARMOUR ETCH® Cream container before beginning your project.

1. Clean the glass or mirror thoroughly to remove all grease, dust and fingerprints. Avoid cleaner solutions that advertise "Finger print resistant", as these cleaners leave a film on the glass that hinders the etching process. Avoid finger prints on the glass where you are going to etch. Dry glass or mirror completely.

2. Choose the design of your choice and carefully cut the stencil sheet and the frosted backing sheet together to avoid touching the back side of the stencil sheet. Measure carefully to determine where you will locate the stencil on the glass or mirror. Separate the blue stencil sheet from the frosted backing sheet. Put aside the frosted backing sheet to be used later. Place stencil sheet on the glass with the blue (tacky) side touching the glass. Secure stencil sheet temporarily to the glass with masking tape as shown in **Photo 1**.

3. Using the wood stick enclosed, transfer the stencil from the sheet to the glass surface by rubbing firmly over the design with smooth, even strokes. Rub left and right, then up and down. **Do not dig into the stencil.** You will be able to see the stencil being transferred by the change in color from a dark blue to a lighter blue see **Photo 1**. Be careful when you rub near the edge of the stencil not to peel it back up by accident.

4. When the entire stencil has been adhered, carefully remove some of the masking tape and slowly peel back the clear top sheet. See **Photo 2**. If the stencil has not been totally adhered to the glass, put the top sheet back down and re-rub area until all pieces are adhered.

5. Apply a border of masking tape around the entire stencil overlapping the tape on the blue stencil by 1/16" to 1/8", being careful not to overlap the design. See **Photo 3**. This overlap prevents the etching cream from contacting the glass and etching unwanted areas!. If a very large area of glass needs to be protected, use strips of adhesive backed shelving vinyl. When all sides of the stencil have been taped, use the white frosted backing sheet to lightly rub over the entire stencil area. Check the stencil for small tears or holes by holding the project up to the light. If any holes appear, cover them with small pieces of tape. Be careful where you put the tape because the stencil will tear if you try to remove it.

6. For best etching results we recommend that the room temperature, the etching cream temperature and the object you are etching be over 70 degrees. Shake the ARMOUR ETCH® Cream thoroughly. Work in a well lighted and well ventilated area near a water source. Wear plastic gloves and protective eyewear. You must apply a thick layer of etching cream in order for the chemical to react properly on the glass or mirror. Stay within taped area. See **Photo 3**.

7. Allow ARMOUR ETCH® Cream to remain on glass for one minute only.. No longer! Then immediately wash off all the etching cream under luke warm water see **Photo 4**. Some of the stencil will be removed during this rinse but it's OK. After all traces of the etching cream are washed away, remove all the remaining tape and stencil pieces. Clean the glass using window cleaner, and dry completely.



Photo 1



Photo 2



Photo 3



Photo 4

1. On a piece of paper, determine the wording you wish to etch and arrange the words in the manner you wish them to appear. Count the number of letters on each line (including spaces between the words) and find the center point of each line. Count capital letters as if they were two or three letters according to their width. (i.e.: W, M, etc). This paper is your **reference guide**.

2. Clean the glass you wish to etch. Avoid using cleaners that promote "finger print resistant", as these cleaners leave a residue or film on the glass that will hinder the etching process.

3. To set up the guidelines on your glass, measure down from the top of the glass to where you would like the first line to start. Measure and mark in several spots along glass with a fine tip washable marker to create a straight line. Lay a strip of masking tape along the bottom edge of the marks and wipe away marker lines. Determine where the center point of your first line will be on the glass and mark on the tape.

4. Cut the stencil sheet into horizontal strips. This will make it easier to align the letters and rub them down. Using your **reference guide** from step 1, locate your center letter on a stencil strip and position accordingly at your center mark, lining up the bottom edge with the masking tape. See **photo 5**. Hold stencil strip in place making sure the letter you are transferring is flat against the glass and aligned vertically.

5. Transfer the center letter onto the glass by carefully but firmly rubbing the letter down with the craft stick that comes in the stencil package. The stencil will change from dark blue to light blue when it releases from the transfer sheet. If the stencil is a little stubborn, rub a little harder until it releases.

6. Following your **reference guide**, apply the rest of your letters one by one, first to the left, then to the right, overlapping the blue edges of the stencil slightly so there are no spaces or gaps in between the stencil letters. See **photo 6**. When you approach a place where a space is needed, cut a piece of masking tape the size of a mid-width letter and tape in place, overlapping the blue stencil edges the same as you did for the letters. Fix any small gaps that may have happened with a sliver of masking tape or some art mask. Repeat the above steps for any additional lines of wording.

7. Once all your lettering is in place, carefully apply masking tape all around the outer edges of your completed words or phrases, overlapping the blue edges of the stencil. Take care not to cover any part of the open areas of the actual letters with tape. Continue applying masking tape or contact vinyl to all surrounding areas of glass. See **photo 7**. If you do not protect the surrounding glass, the etch cream can "haze" or "fog" unprotected areas of glass during the rinsing process. Once completed, take the frosted backing sheet from stencil package and carefully rub over all stencil letters and tape to make sure they are secured to the glass.

8. Working quickly and safely, apply a thick layer of etch cream to entire stencil phrase with a craft brush, staying within the taped area. You should not be able to see stencil design through the cream. Leave etch cream on stencil ONE MINUTE MAXIMUM! No longer! After one minute wash off all traces of etch cream under lukewarm, running water. Remove stencil and tape. Clean with glass cleaner and dry completely.



Photo 5

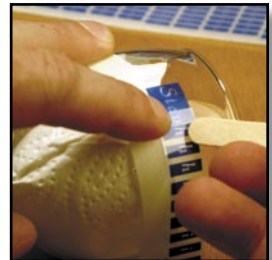
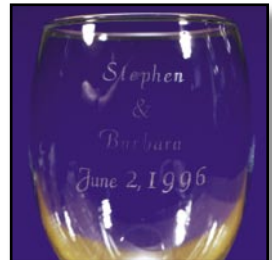


Photo 6



Photo 7



Finished